

etc

EDITION 2011

Hans op de Beeck (*1969)

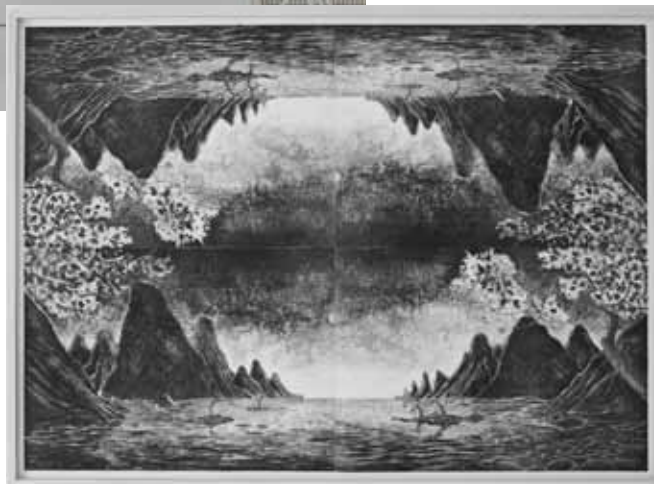
STAGED LANDSCAPE

Four panel lithograph in the form of an inverted diptych, hand drawn onto the litho stone, printed in three tones of grey, on 300 gm BFK Rives, the four panels inscribed A to D, panel D signed, dated and inscribed in pencil, an edition of 18 impressions, printed by Thomi Wolfensberger at J. E. Wolfensberger, Zurich published by etc | expanding the contemporary and Kunstmuseum Thun.

SIZE: 152 x 212cm (overall)

CHF 10.000

etc



Hans Op de Beeck „Staged Landscape“, 2011. Exhibition view Kunstmuseum Thun